



// ROLFLEX® SW 3 - ELAFIX PV 5 //

ROLFLEX® SW 3: soft and natural feel with improved peeling strength

A non ionic polyurethane dispersion for padding applications providing excellent film coating of the textile fibres and greatly improving the surface slippage of the fibres, thanks to a special polymeric chain which incorporates a polysiloxane.

ROLFLEX® SW 3 can be used alone or combined with ROLFLEX® HGT which preserves the excellent hydrophilic characteristics which are particularly important in sportswear fabrics.

The recommended dosage of ROLFLEX® SW 3 is between 50 and 150 g/L, depending on the desired technical function of the treated fabric.

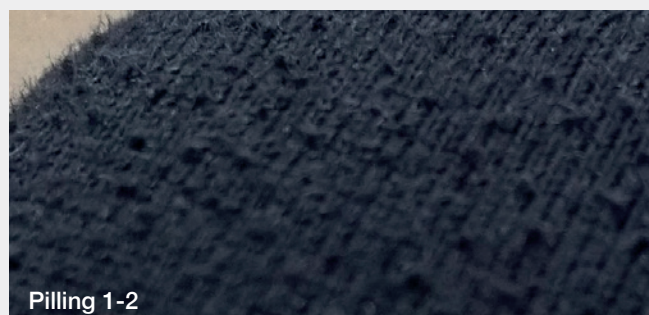
ROLFLEX® BK 18 is the recommended catalyst to be used providing increased resistance to the every-day wear and tear and cleaning of home and garment fabrics.

Illustrated below is an example recipe with the relative pilling test results.

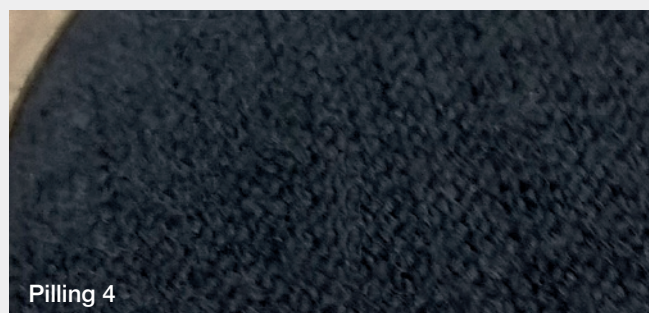
Recipe	Quantity
ROLFLEX® SW 3	100 g/L
ROLFLEX® BK 18	10 g/L

Dry and cure 150 °C for 2 minutes

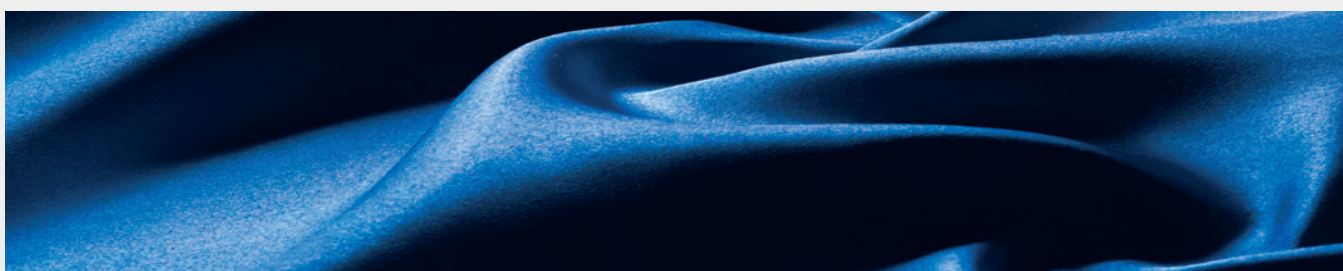
Untreated



Treated



Standard method UNI EN ISO 12945-1:2002 – Results after 2500 cycles





ELAFIX PV 5: anti-felting and anti-pilling properties to pure and blended wool fabric

ELAFIX PV 5 provides excellent anti-wrinkle finishing in addition to traditional performance, enhancing glyoxalic resin recipes greatly reduces the total formaldehyde content of the recipe. ELAFIX PV 5 is applied by padding to fabrics which need to be thoroughly cleaned and neutralized for optimum performance. The recipes illustrated below are some good examples. Normally each recipe needs to be studied according to the desired characteristics of the fabric to be treated.



Padding treatment (wool and blends) – Finishing

Products	Anti-pilling recipe	Anti-felting recipe for dyed yarn fabric or plain weave	Anti-felting recipe for difficult kind of fabric
ELAFIX PV 5	20-30 g/L	50 g/L	100 g/L
LAMFINISH LW	0-5 g/L	5 g/L	5 g/L
IMBITEX NRW 3	1 g/L	1 g/L	1 g/L
Sodium bicarbonate sol. 10%	20-30 g/L	50 g/L	80 g/L

Dry and cure at 140 °C for 2 minutes

General characteristics

	ROLFLEX® SW 3	ELAFIX PV 5
Dry content %	34 - 36	33 - 37
pH at 25 °C	8 - 10	2 - 4
Viscosity brookfield RVT at 50 rmp	< 200	< 600
Ionic charge	non ionic	amphoteric
Anti-pilling	•	•
Anti-wrinkle	•	•
Dimensional stability	•	•
Anti-shrinking (wool and blends)		•



Lamberti Group Headquarters

Via Marsala, 38/d
21013 Gallarate (VA) - Italy

Business Unit Soft Coating Compounds
Textile Coating & Synthetic Leather
Phone +39 0331 715 763
Fax +39 0331 715 800
textiles@lamberti.com